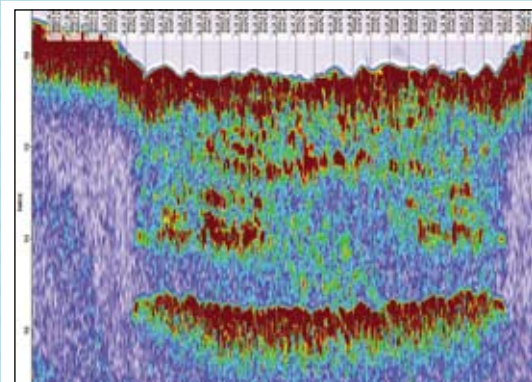


SUBPRO 1210 Sub-Bottom Profiler

High Resolution at Outstanding Sediment Penetration

The SUBPRO 1210 is a state of the art high-frequency, high power sub-bottom profiler. Its advanced sending signal synthesis, high performance data acquisition, very high dynamic range and SNR as well as advanced signal processing and advanced gain functions make it a versatile survey system with outstanding advantages for a wide range of applications with different survey tasks.



Sand Layers on Bedrock



Applications:

- High resolution subsoil exploration
- (Buried) pipeline, cable and object detection
- Offshore hazard surveys
- Dredge, mining and dump monitoring
- Very shallow water surveys
- High sediment load surveys
- Volume determination (e.g. for sand reclamation)
- Scour detection and monitoring
- Environmental surveys
- Archaeological surveys
- Sediment transport investigations
- Sediment monitoring for jack-up deployment
- Validation and extension of hydrographic surveys at soft sediments and highly concentrated suspensions
- Sediment density profiling

Advantages:

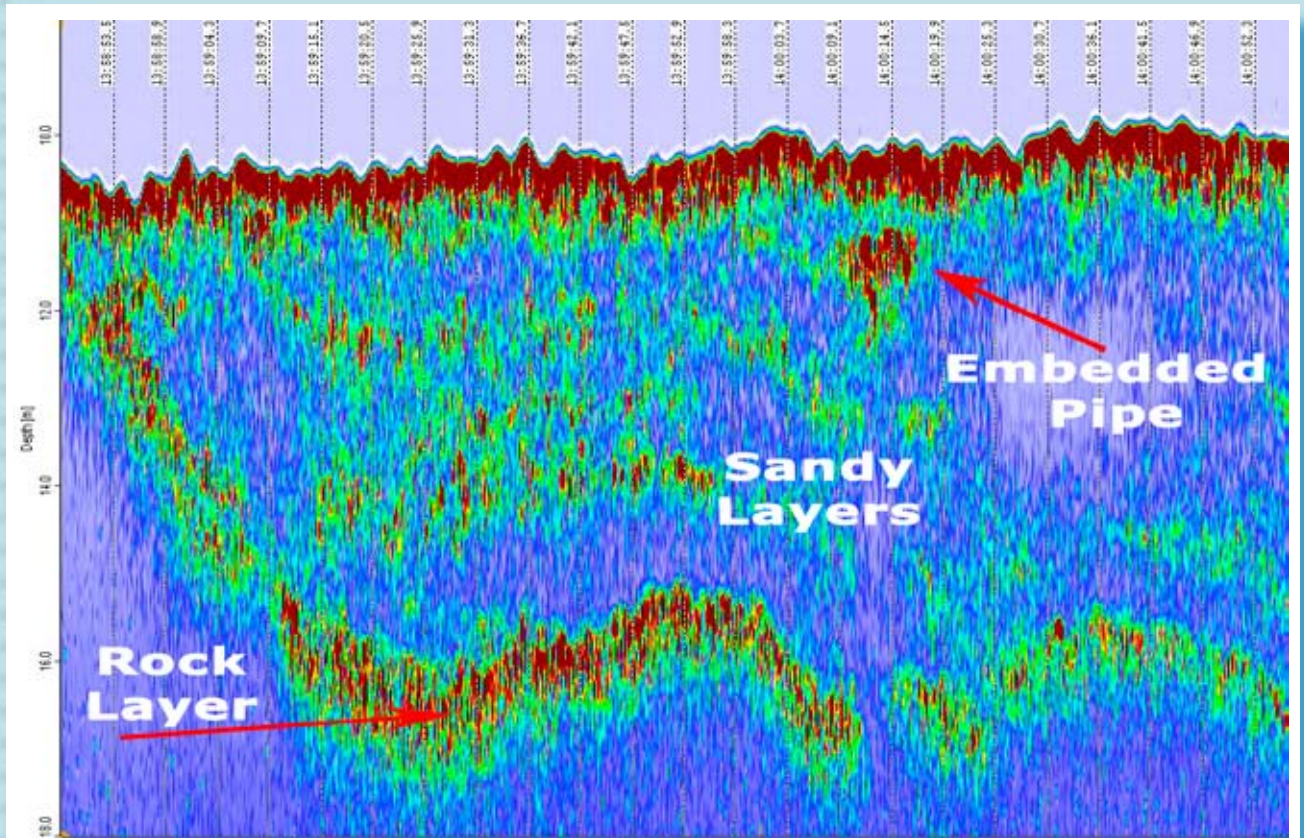
- Fulfills most sub bottom surveying tasks in only one system
- High Resolution at complete Measuring Range
- Typical Seabed Penetration up to 10m in sand
- Highest Detection Probability of objects and layers
- Real-Time Zoom and re-processing of RAW data
- Shallow Water Surveying starting at 1.5m
- Easy to use WINDOWS software SUBPRO Studio for operation and re-processing
- Complete stand-alone system and easy system integration
- Simultaneous sub-bottom and hydrographic results
- Effective thanks to multiple results from the same data set and to superior results per ping ratio
- No result interpretation with customized processing modules
- Suitable from survey to research and from helmsman to surveyor
- The high sensitivity of the SUBPRO1210 enables a virtual high frequency horizon compatible to echo sounders



Transducer mounting at typical survey speed

SUBPRO 1210 Sub-Bottom Profiler

High Resolution at Outstanding Sediment Penetration



Survey in the Port of Aberdeen

The **SUBPRO 1210 system** consists of a controller unit and a high performance PC in 19" housings. The complete system incorporates the controller for triggering, transmitting, receiving, amplifying and processing of signals, analysis unit, pps-module for time synchronisation and power supply.

The PC unit includes the storage of raw files, results and project files, TFT monitor and easy to handle WINDOWS® software SUBPRO Studio for re-/post-processing and export of data.

Specifications:

Technical internal resolution: 24 bit / 1 mm

Typical penetration: up to 10m in Sand
>>10m in soft sediments

Frequency: 12 kHz / 25-45 kHz wideband

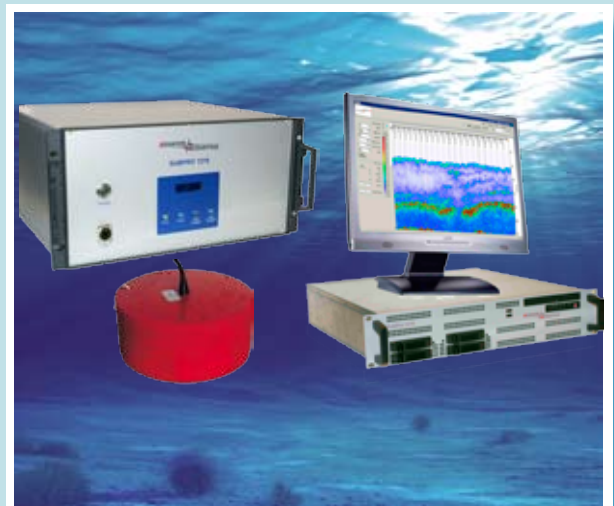
Transmit Power: up to 10/4 kW peak

Weight of Transducer: 35 /30 Kg

Size of Transducer (Ø/height): 380 mm / 165 mm

Input: pps time, GPS (NMEA), HRP (optional)

Output: SEG-Y, XTF (optional), Ethernet, Printer, DVD-R



Complete SUBPRO 1210 System

Representative of General Acoustics:

General Acoustics

Am Kiel-Kanal 1

24106 Kiel / Germany

Phone: +49 431 5 80 81 80

info@GeneralAcoustics.com

www.GeneralAcoustics.com

SUBPRO 1210